



For more than 75 years...

Basler Electric products have provided the reliability and superior performance required to support the power industry around the world.

Always Innovating. Always Evolving.



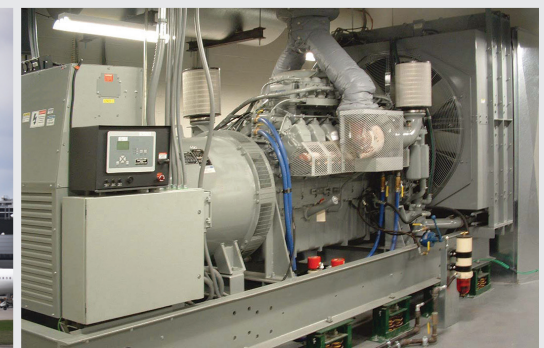
[www.basler.com](http://www.basler.com)

# ADAPTABILITY

Basler Electric provides a wide range of products for the control and management of electric power worldwide. Our products are designed to provide solutions for industries and applications where reliability is essential.

## Industries Served

- Industrial
- Marine
- Commercial
- Power Distribution
- Power Generation



## Typical Applications

### Voltage Regulation and Excitation Control of Rotary or Static Excited Machines:

- Prime Power Generator
- Utility Power Generation
- Standby Genset
- Synchronous Motor
- Synchronous Condenser
- Pump Storage Generator

### Protection and Control:

- Feeder
- Generator
- Intertie
- Transformer
- Motor
- Bus
- Breaker

### Control of Generator Sets:

- Emergency Standby
- Prime Power
- Peak Demand
- Portable
- Combined Heat and Power (CHP)

## Excitation Systems

Basler is the complete excitation system solution for any new or retrofit application up to 10,000 Adc.



## Voltage Regulators

With more than 50 years of industry leading experience in AVR design and application, Basler's digital systems and analog designs provide the perfect solutions for any application.



## Protective Relay Systems

Basler makes superior protection equipment that eliminates settings errors, are easy to configure and set, and provides reliability for a wide range of protection solutions.



## Genset and Engine Control

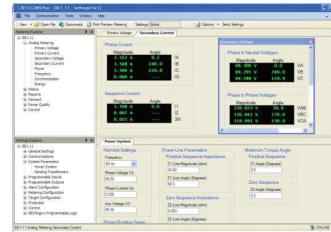
Basler controls are available for any application, including simple stand alone up to complex, paralleled systems. Flexible controls with PLC functionality, protection, and load sharing along with our simple configuration make difficult applications easy.





## Software Interface

BESTCOMSPPlus® software for Basler's Power Systems products is easy to use and features a common platform for all products which reduces training time, commissioning time, setup expenses, and potential programming errors that may cause false trips.



## Service & Support

- 24/7/365 Customer support
- Field service for commissioning and troubleshooting support
- Regional technical support worldwide
- Application and design support
- Complete engineering and installation services
- Private labeled and custom engineered products



Basler Plastics, LLC, a wholly-owned subsidiary of Basler Electric Company, specializes in cost-effective injection molding, design and build molds, and offers product development support, light assembly, and secondary services for high volume operations.



JJ Consultancies S.A . (Representante Argentina)  
Tel: +54(261)4323463  
mail: [contacto@jjcsa.com](mailto:contacto@jjcsa.com)  
[www.jjcsa.com](http://www.jjcsa.com)  
Mendoza, Argentina.

Our core purpose is to enhance people's lives by developing highly reliable solutions that add quality to their lives. This is achieved through innovation and performance of our core values.

Headquartered in Highland, Illinois, Basler Electric is a family owned business with a global presence. That global presence helps us identify the needs of specific markets and applications worldwide and provide solutions with quality products and services to meet our customers' requirements.



**Basler Electric Worldwide Headquarters**  
12570 Route 143 • Highland IL 62249-1074  
1.618.654.2341 • [info@basler.com](mailto:info@basler.com)

**Suzhou, PR, China**  
86.512.8227.2888  
[chinainfo@basler.com](mailto:chinainfo@basler.com)

**Singapore**  
65.68.44.6445  
[singaporeinfo@basler.com](mailto:singaporeinfo@basler.com)

[www.basler.com](http://www.basler.com)

